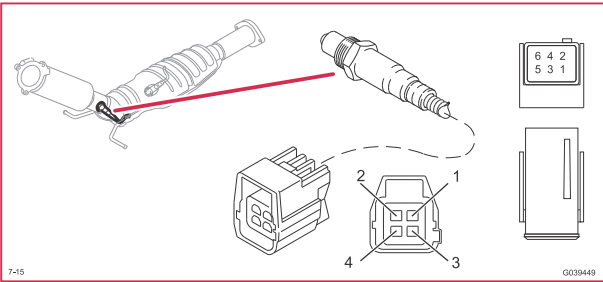
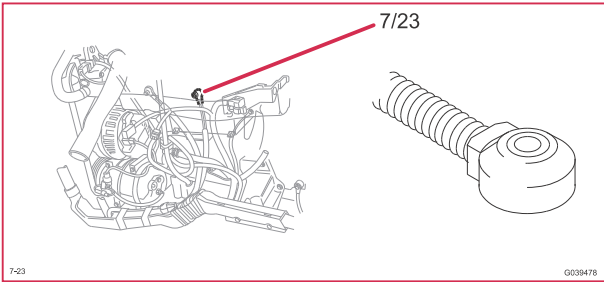


零件插图  
7/15 - 7/31

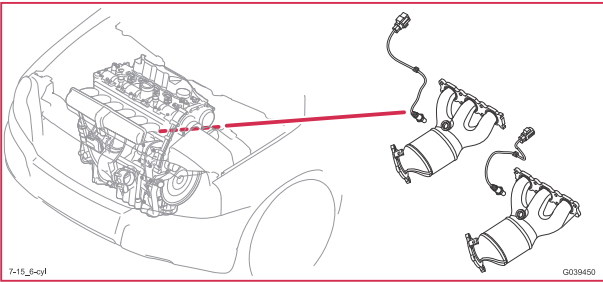
7/15 加热含氧传感器, 5 气缸



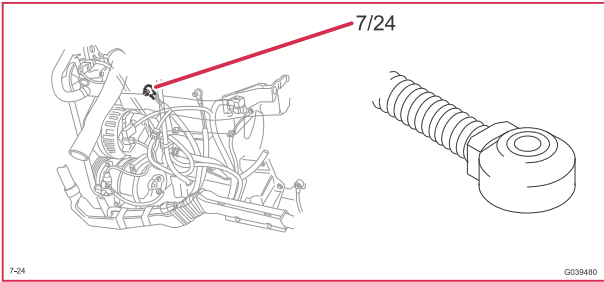
7/23 后爆震传感器



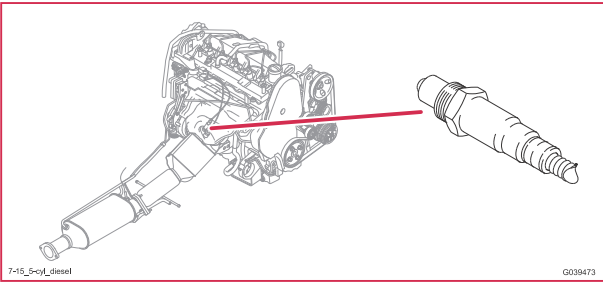
7/15 前加热含氧传感器, 缸列 2, 6 气缸



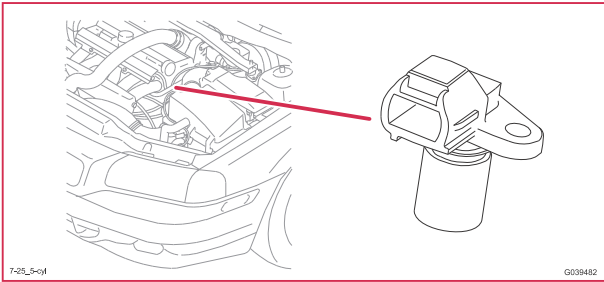
7/24 前爆震传感器



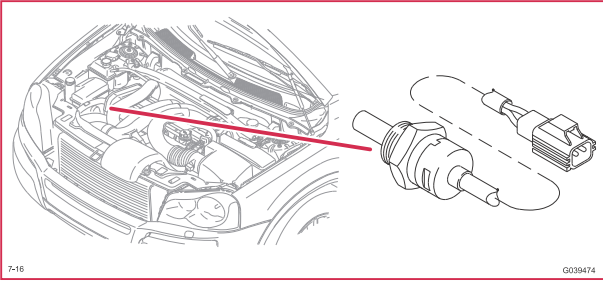
7/15 加热含氧传感器, 柴油发动机



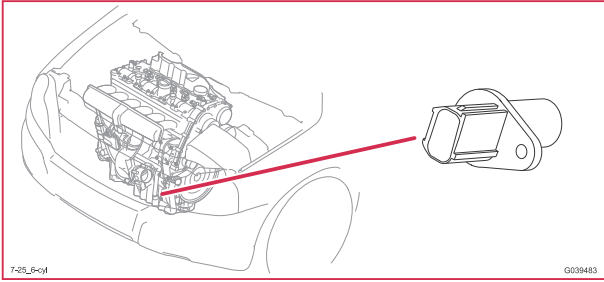
7/25 脉冲传感器, 5 气缸



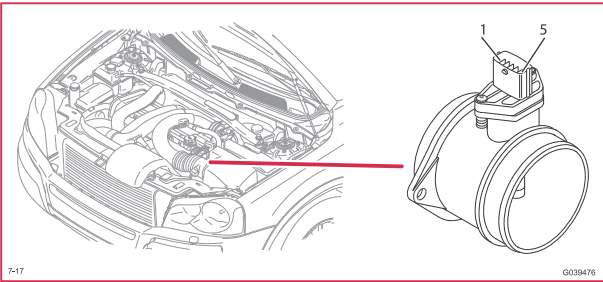
7/16 冷却液温度传感器



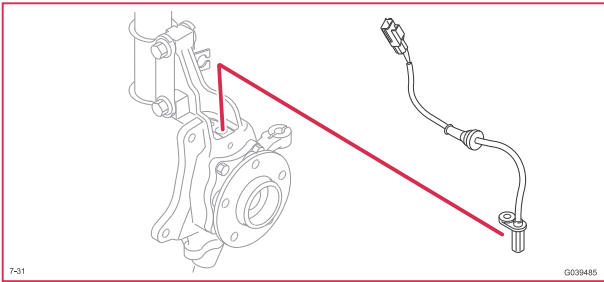
7/25 脉冲传感器, 6 气缸



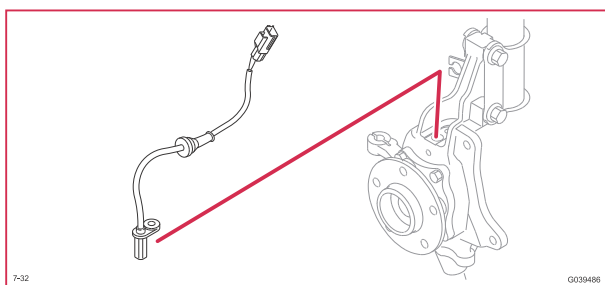
7/17 空气流量传感器 (MAF)



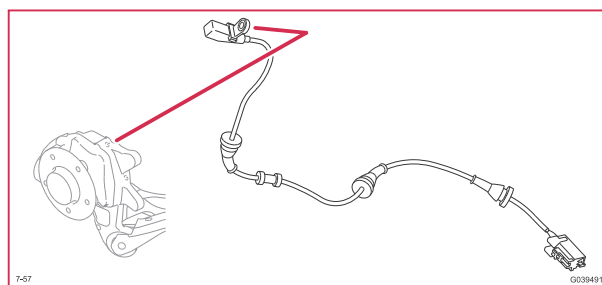
7/31 左前侧 ABS 传感器



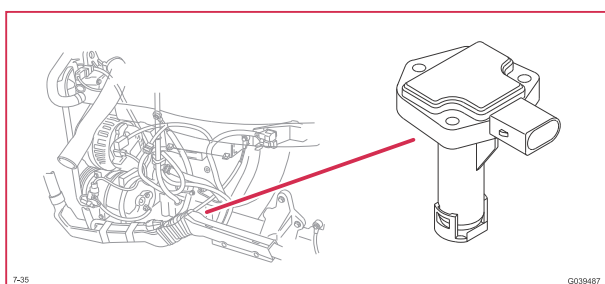
7/32 右前侧 ABS 传感器



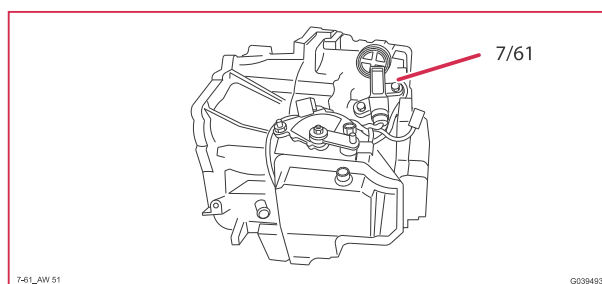
7/57 右后侧 ABS 传感器



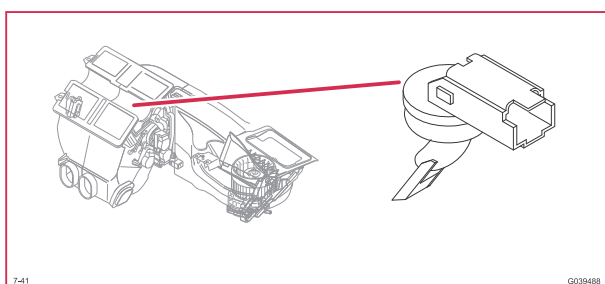
7/35 机油液位传感器



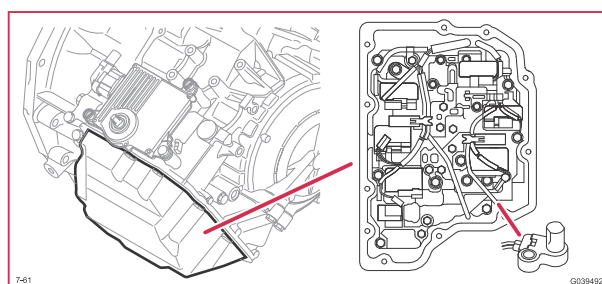
7/61 输入速度传感器 AW51



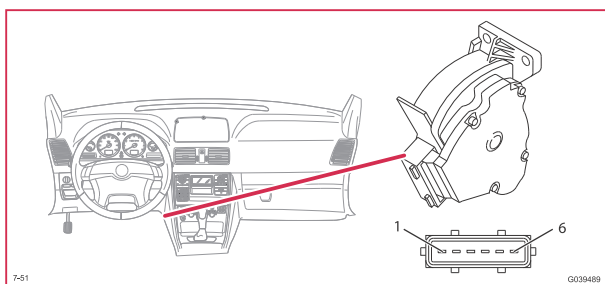
7/41 蒸发器温度传感器



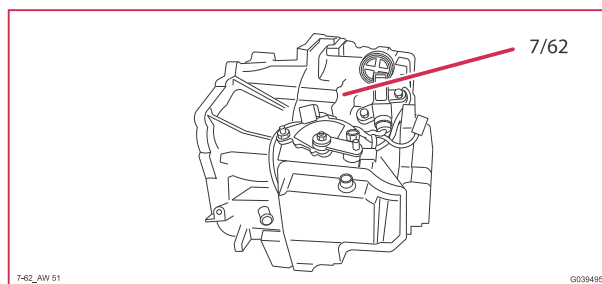
7/61 输入速度传感器 TF-80SC



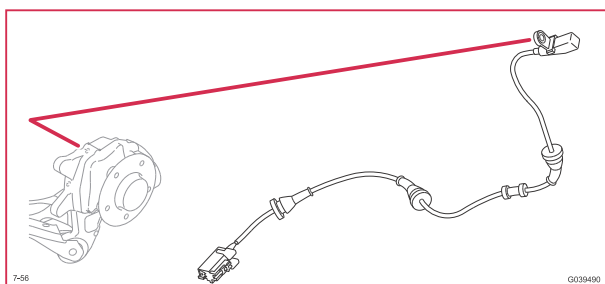
7/51 油门踏板传感器



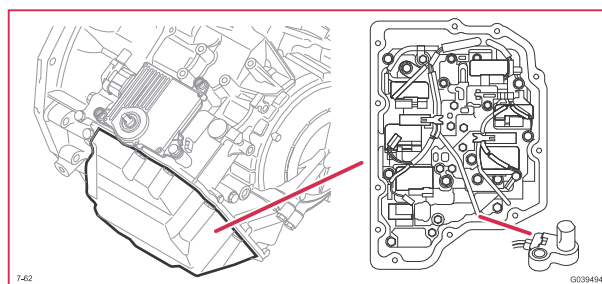
7/62 输出速度传感器 AW51



7/56 左后侧 ABS 传感器

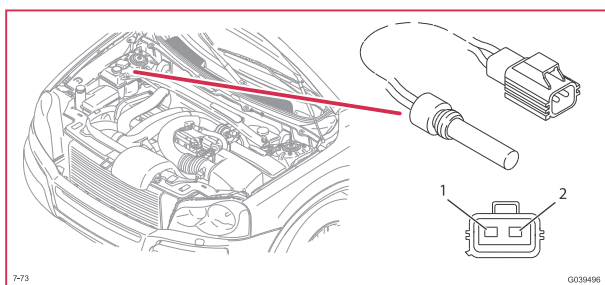


7/62 输出速度传感器 TF-80SC

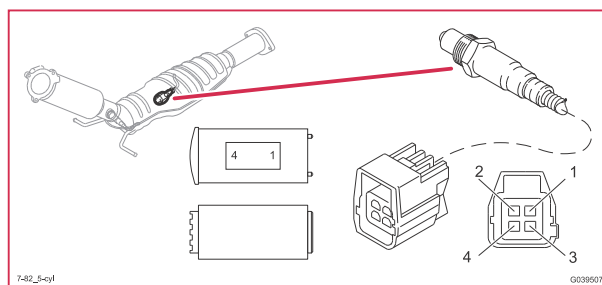


# 零件插图 7/73 - 7/103

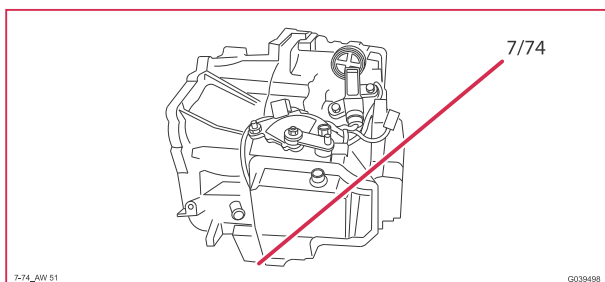
**7/73 冷却液液位传感器**



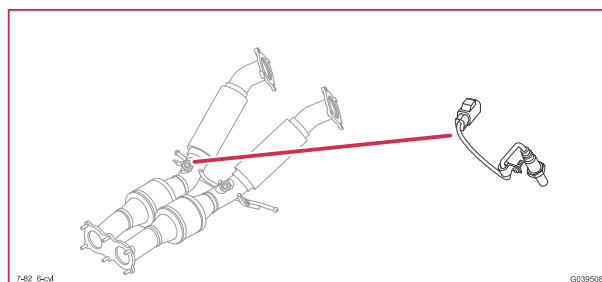
**7/82 前加热含氧传感器, 5 气缸**



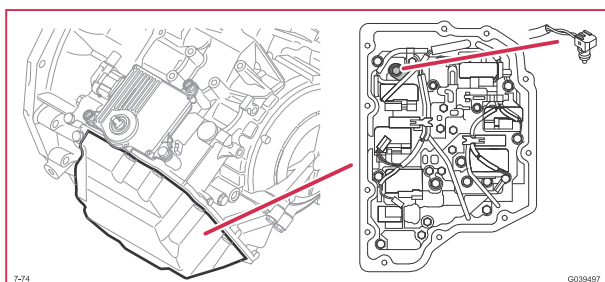
**7/74 油温传感器, 自动变速箱, AW51**



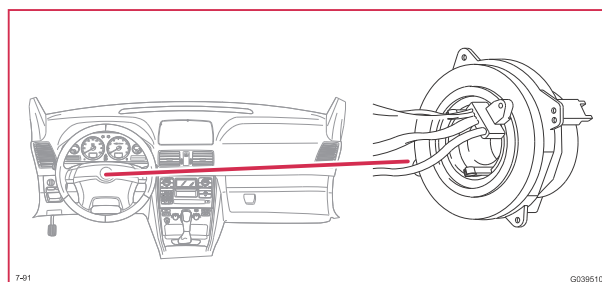
**7/82 后加热含氧传感器, 缸列 2, 6 气缸**



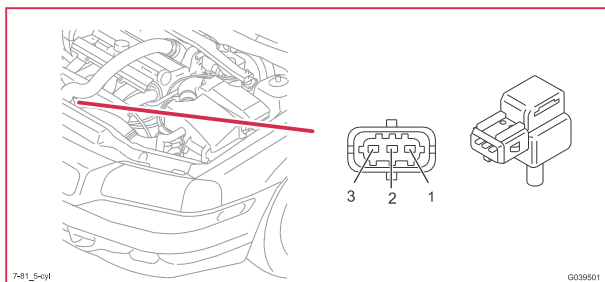
**7/74 液体温度传感器, 自动变速箱, TF-80SC**



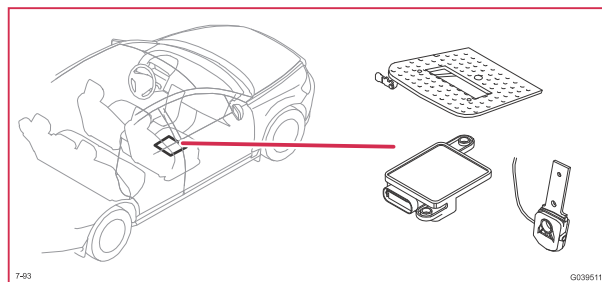
**7/91 方向盘角度传感器**



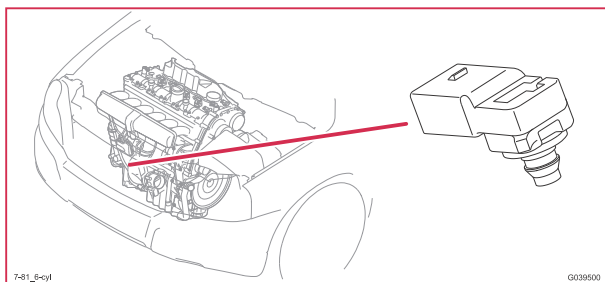
**7/81 进气歧管压力传感器, 5 气缸**



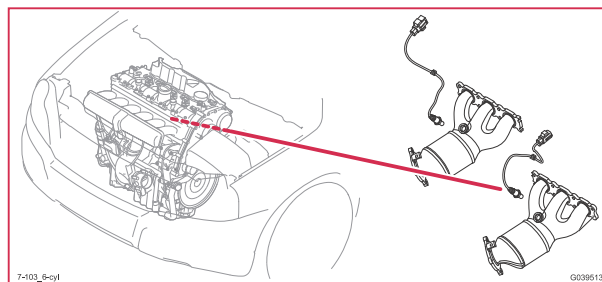
**7/93 乘客重量传感器 (OWS)**



**7/81 进气歧管压力传感器, 6 气缸**

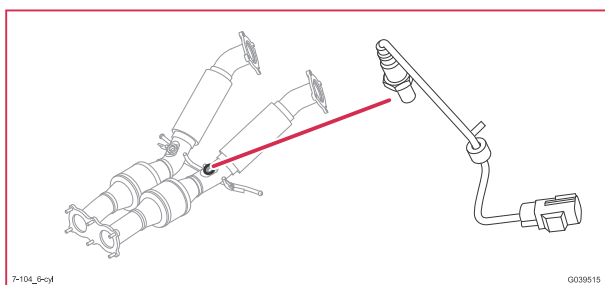


**7/103 前加热含氧传感器, 缸列 1, 6 气缸**

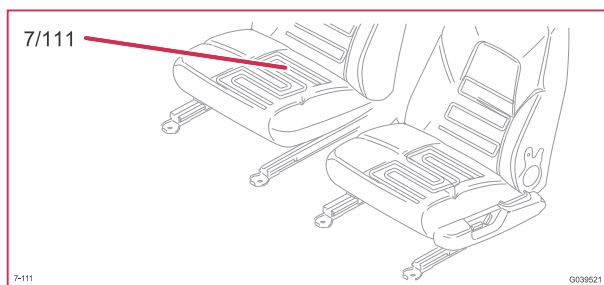


# 零件插图 7/104 - 7/122

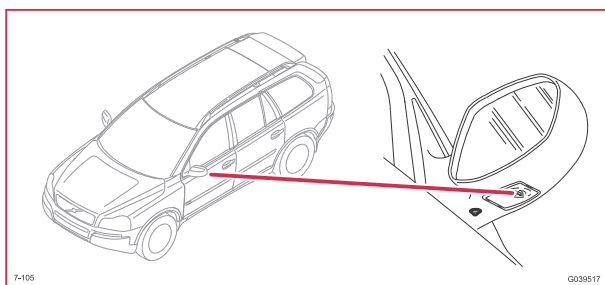
**7/104 后加热含氧传感器，缸列 1，6 气缸**



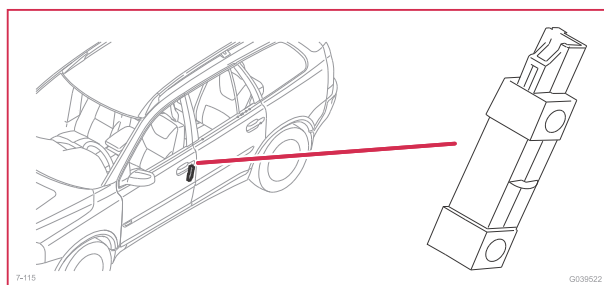
**7/111 右座椅温度传感器**



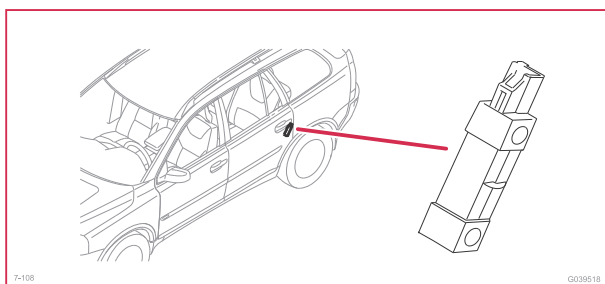
**7/105 车外温度传感器，发动机控制模块**



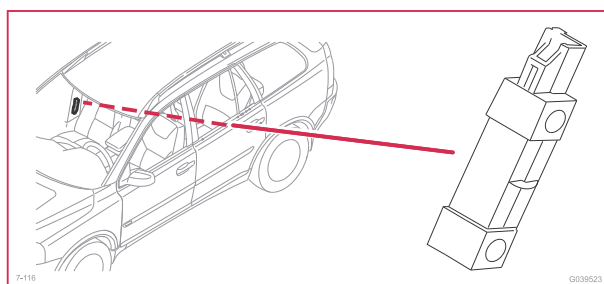
**7/115 左前侧撞传感器**



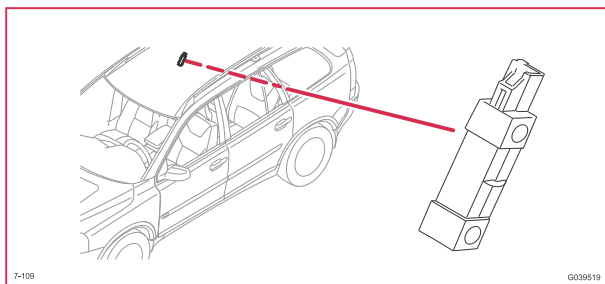
**7/108 左后侧撞传感器**



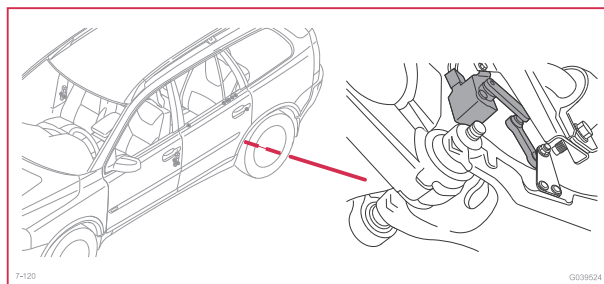
**7/116 右前侧撞传感器**



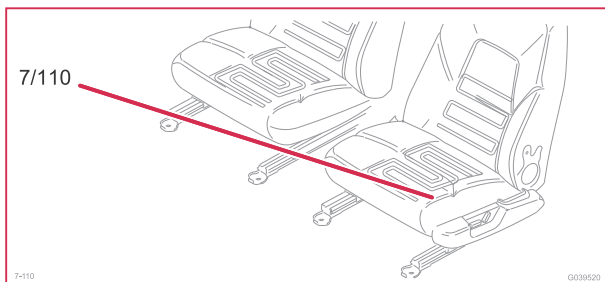
**7/109 右后侧撞传感器**



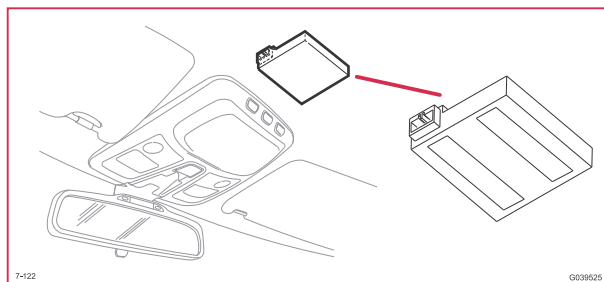
**7/120 左后角度传感器，Four-C 功能 / 双氙气放电式头灯**



**7/110 左座椅温度传感器**



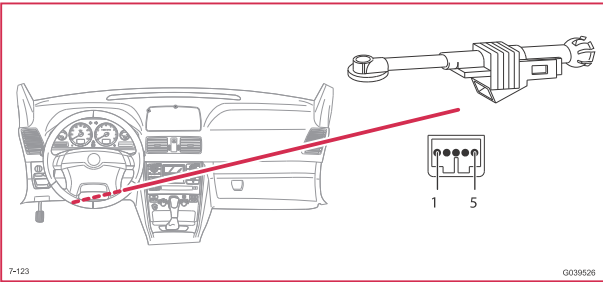
**7/122 前方动静传感器模块 (MMS)**



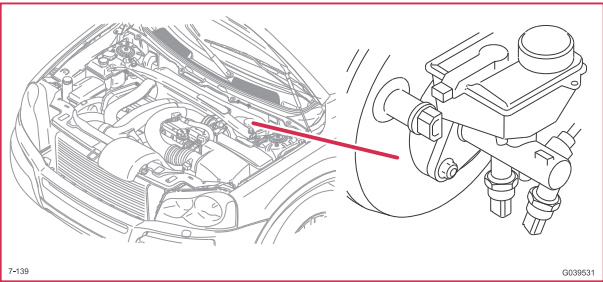


零件插图  
7/123 - 7/156

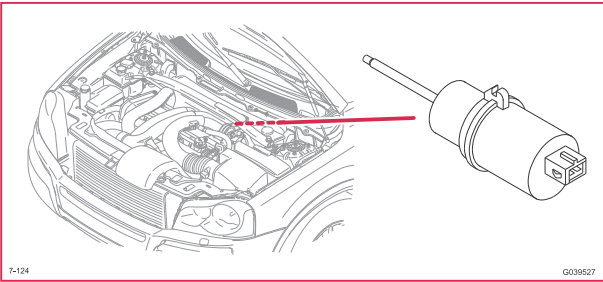
7/123 离合器踏板传感器



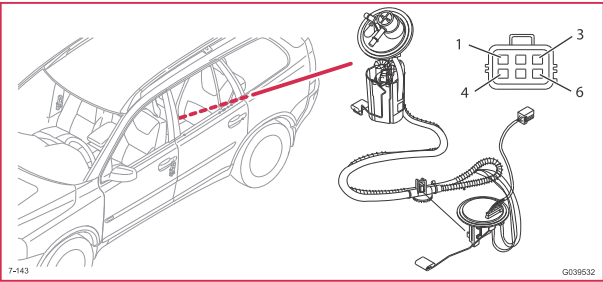
7/139 刹车压力传感器 1 (A)



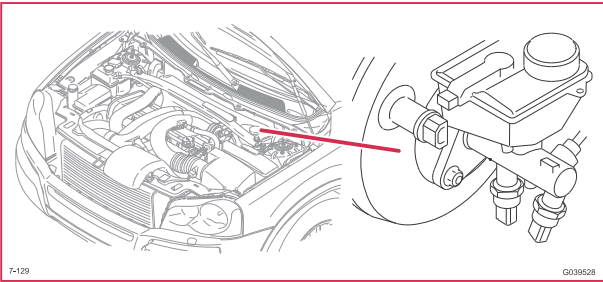
7/124 刹车踏板传感器



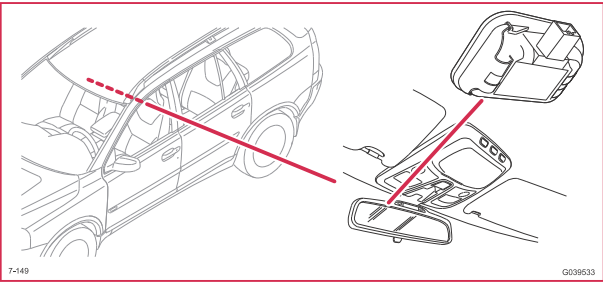
7/143 泵侧燃油油位传感器



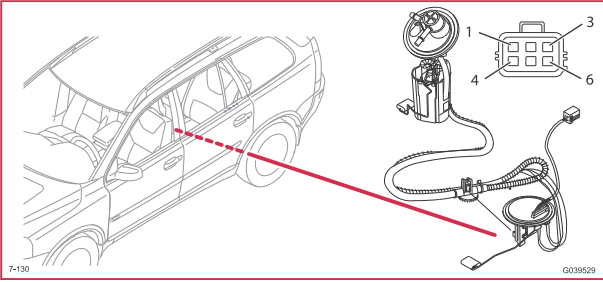
7/129 刹车压力传感器 2 (B)



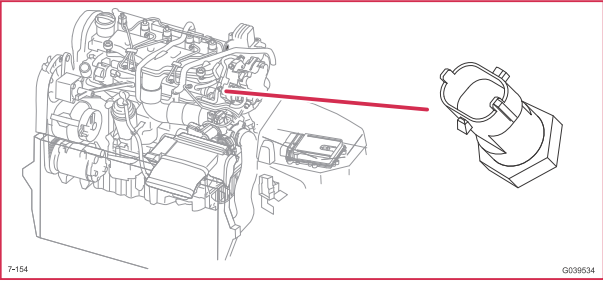
7/149 雨量传感器模块 (RSM)



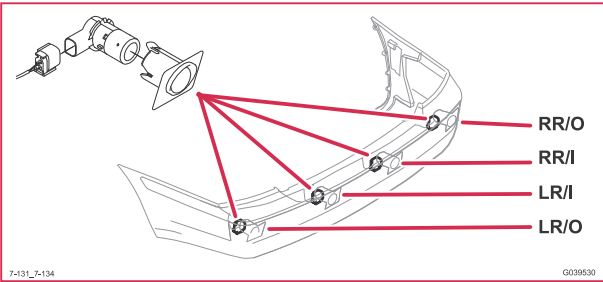
7/130 燃油液位传感器, 喷射器侧



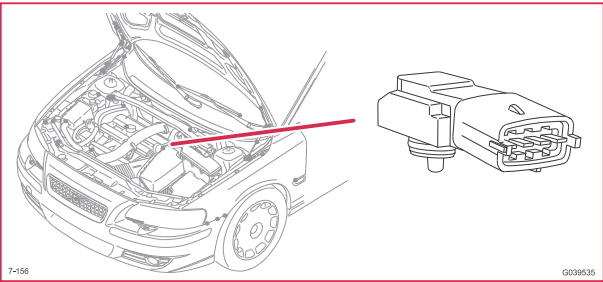
7/154 燃油温度传感器, 柴油发动机



7/131-  
7/134 后驻车辅助传感器

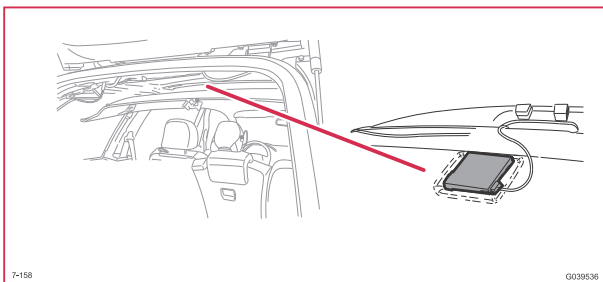


7/156 燃油压力及温度传感器

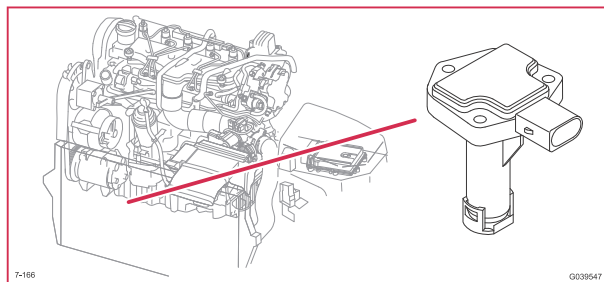


# 零件插图 7/158 - 7/173

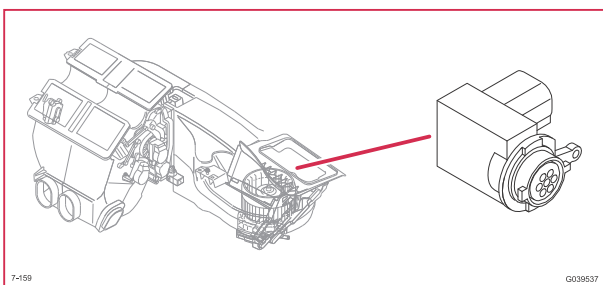
**7/158 后部动静传感器 (MMS)**



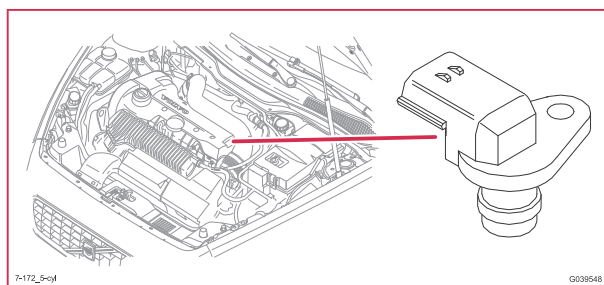
**7/166 机油油位传感器, 柴油发动机**



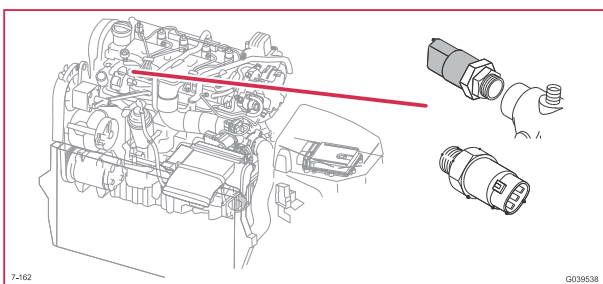
**7/159 空气品质传感器 (AQS)**



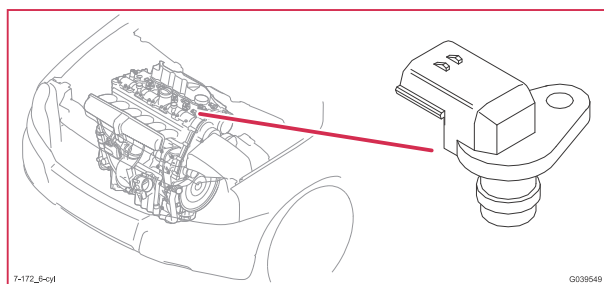
**7/172 进气凸轮轴位置传感器, 5 气缸**



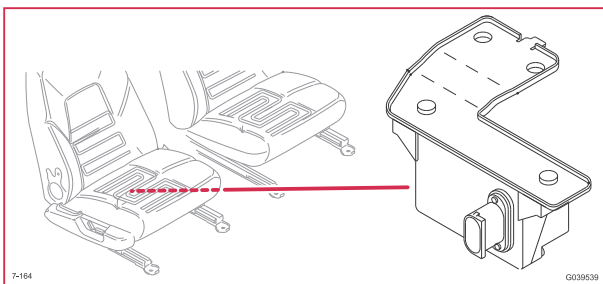
**7/162 燃油管压力传感器, 柴油发动机**



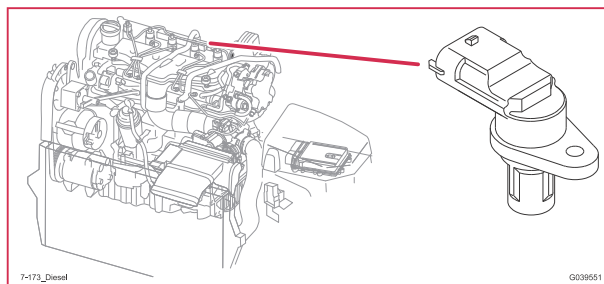
**7/172 进气凸轮轴位置传感器, 6 气缸**



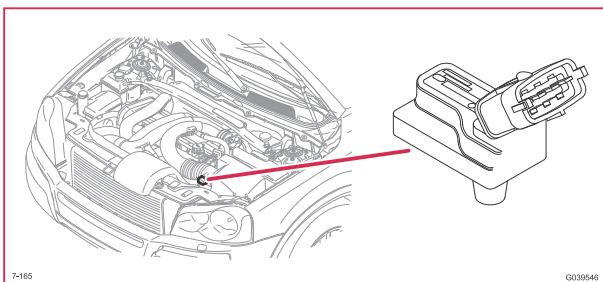
**7/164 车身传感器线束稳定传感器 (BSC)**



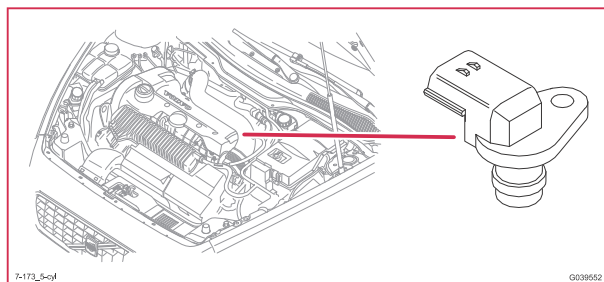
**7/173 凸轮轴排气侧位置传感器, 柴油发动机汽车**



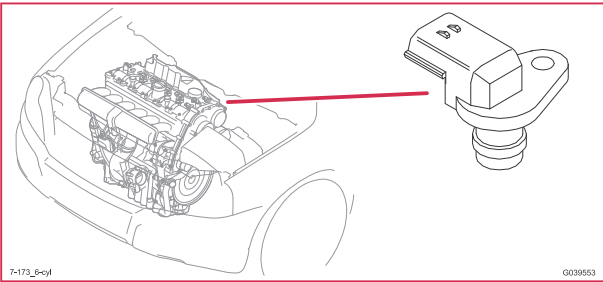
**7/165 进气歧管压力及温度传感器**



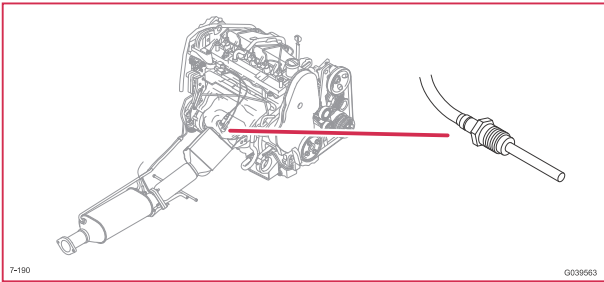
**7/173 出气侧凸轮轴位置传感器, 5 气缸**



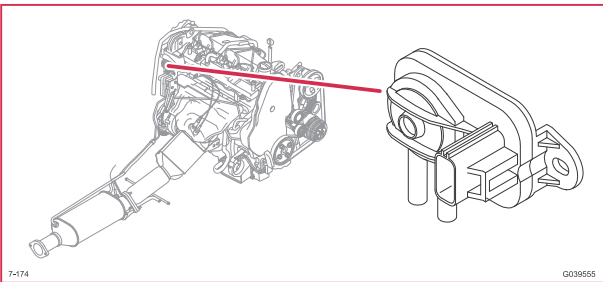
7/173 排气凸轮轴位置传感器，6 气缸



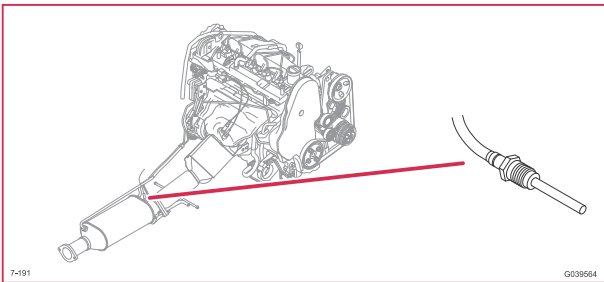
7/190 触煤催化转换器温度传感器



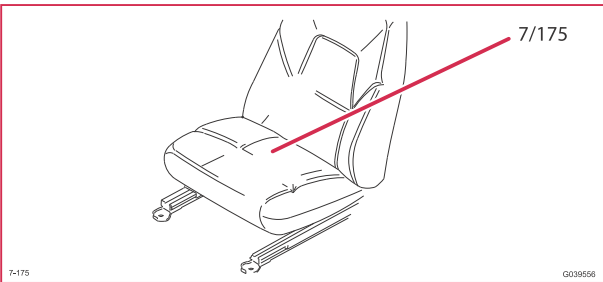
7/174 差压传感器，微粒滤清器



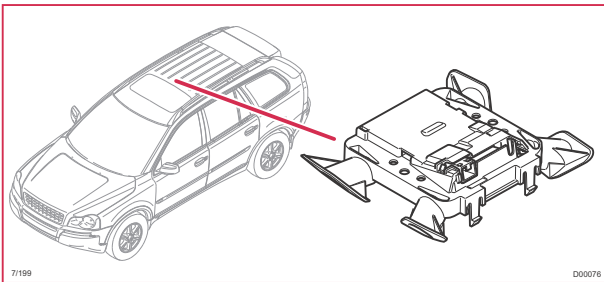
7/191 微粒滤清器温度传感器



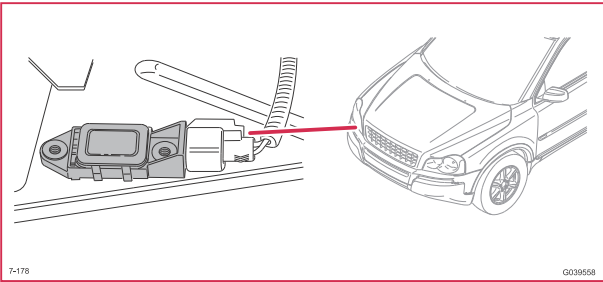
7/175 座椅重量传感器，安全带提醒器



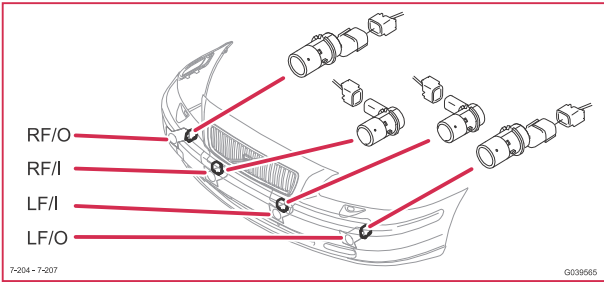
7/199 超声波传感器（IMS）



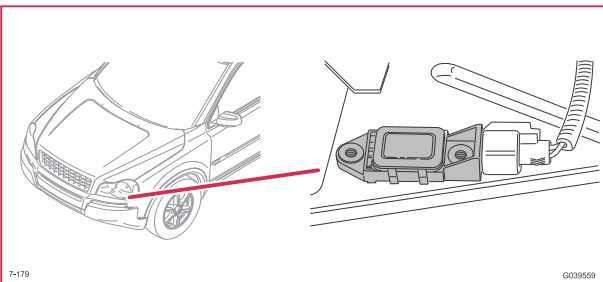
7/178 前部碰撞传感器，右侧



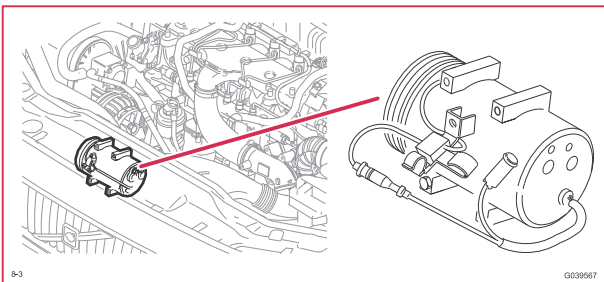
7/204-  
7/207 前部驻车辅助传感器



7/179 前部碰撞传感器，左侧

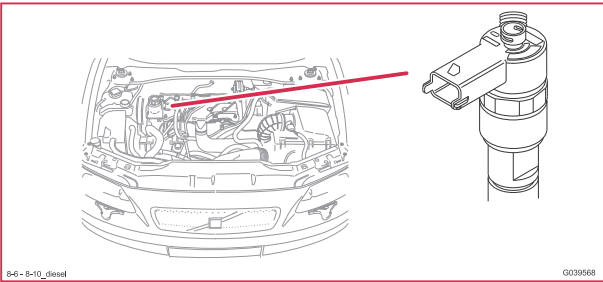


8/3 电磁离合器，恒温控制系统

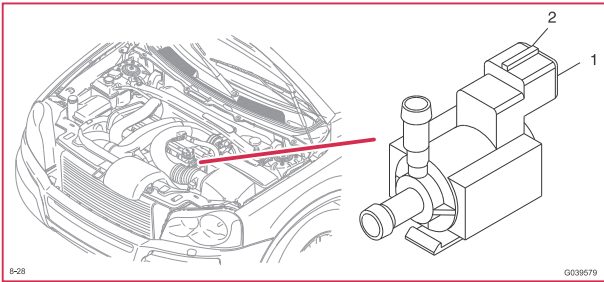




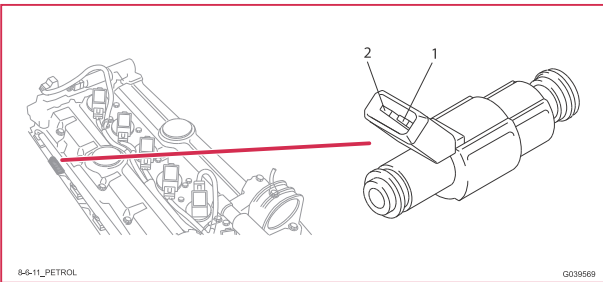
8/6-10 柴油发动机喷油阀



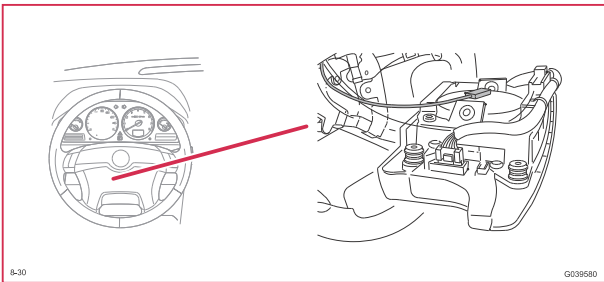
8/28 涡轮增压控制阀



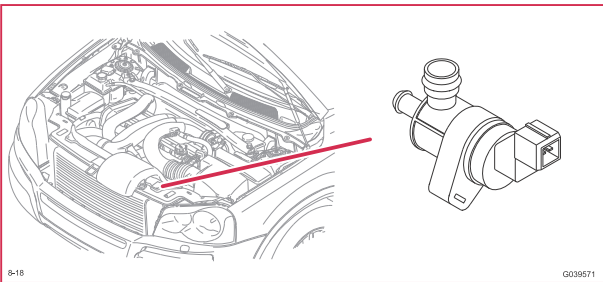
8/6-11 汽油发动机喷油阀



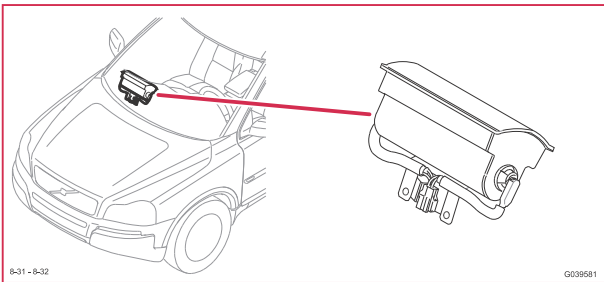
8/30 驾驶员侧气囊起爆器



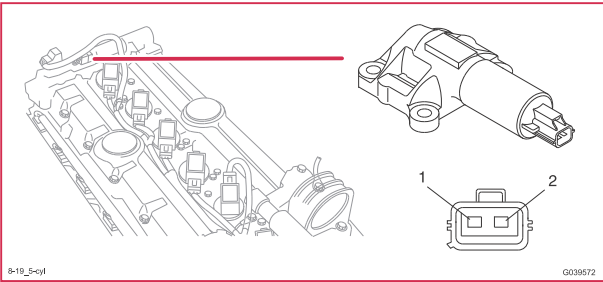
8/18 EVAP 阀



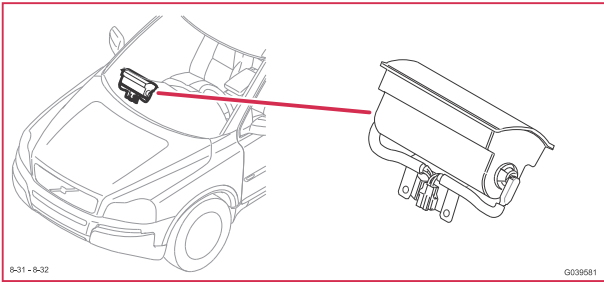
8/31 乘客侧气囊起爆器



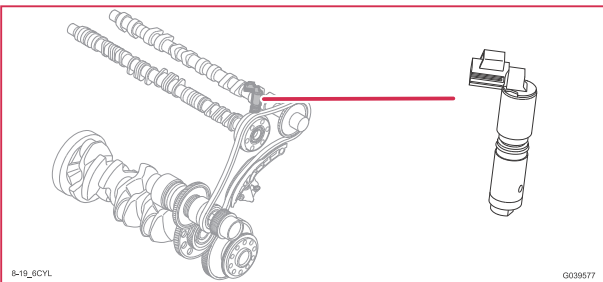
8/19 可变气门正时输入电磁线圈



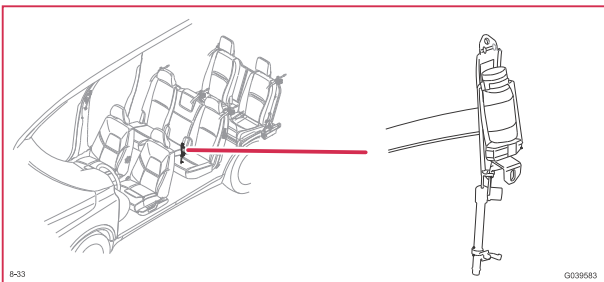
8/32 乘客侧气囊起爆器第 2 阶段



8/19 可变气门正时输入电磁线圈，6 气缸



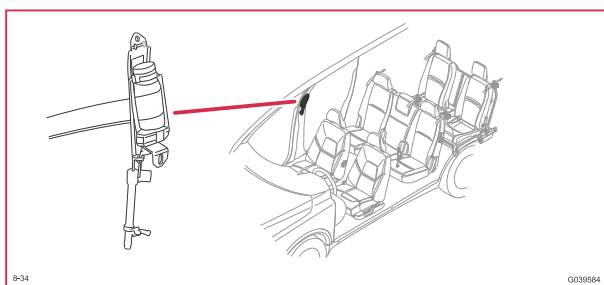
8/33 左前安全带张紧器起爆器



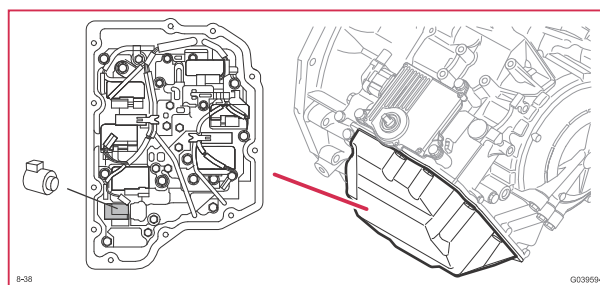


# 零件插图 8/34 - 8/40

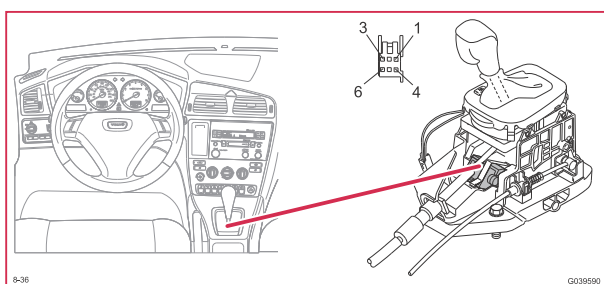
**8/34 右前安全带张紧器起爆器**



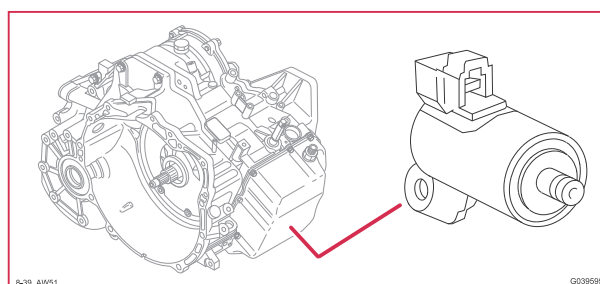
**8/38 排档电磁线圈 1 TF-80SC**



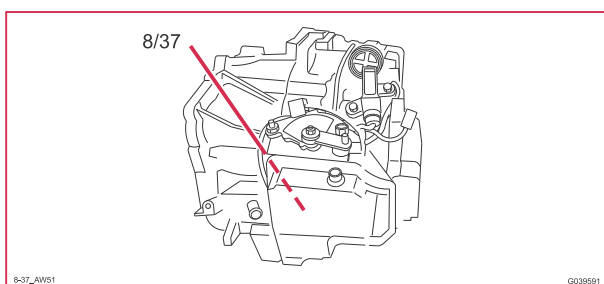
**8/36 排档锁电磁线圈**



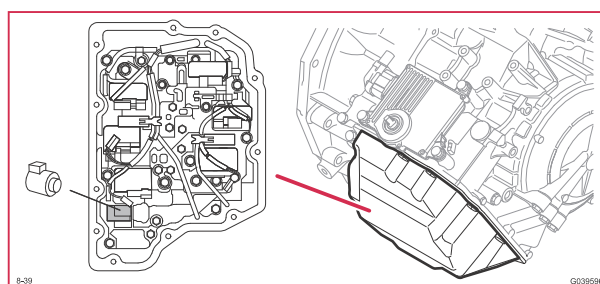
**8/39 排档电磁线圈 2 AW51**



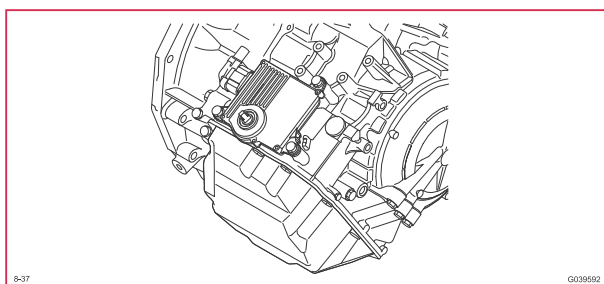
**8/37 自动变速箱 AW51**



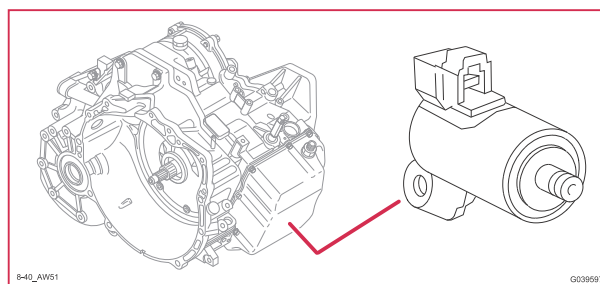
**8/39 排档电磁线圈 2 TF-80SC**



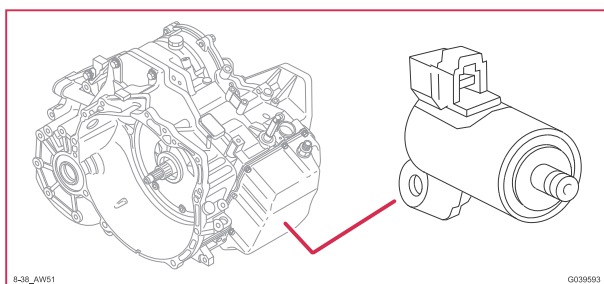
**8/37 自动变速箱 TF-80SC**



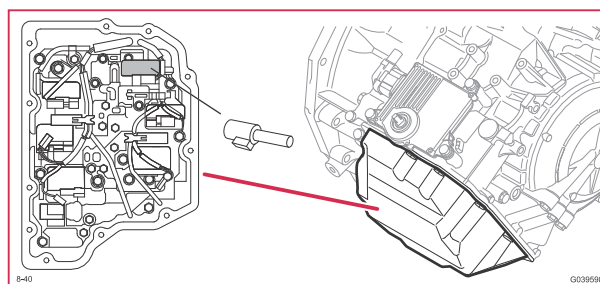
**8/40 锁定电磁线圈 AW51**



**8/38 排档电磁线圈 1 AW51**

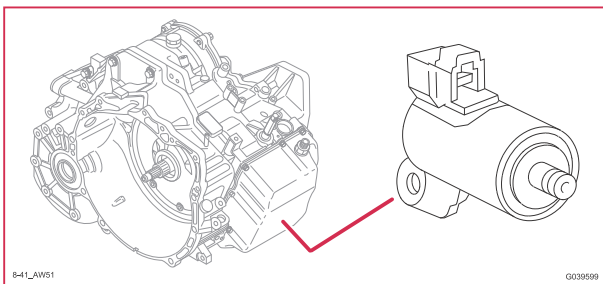


**8/40 锁定电磁线圈 TF-80SC**

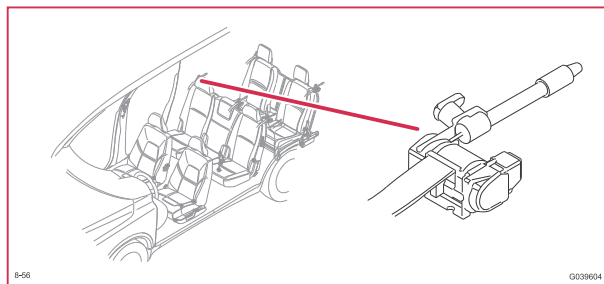


# 零件插图 8/41 - 8/66

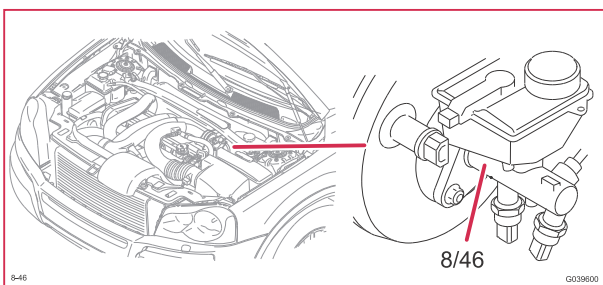
**8/41 压力电磁线圈 AW51**



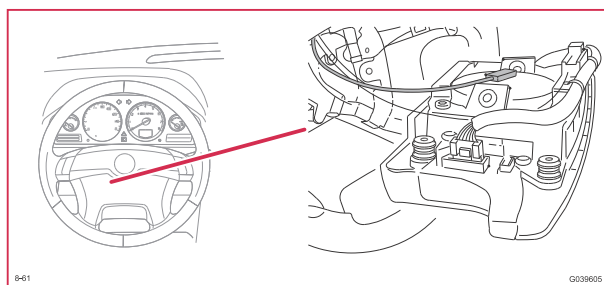
**8/56 右后安全带张紧器起爆器**



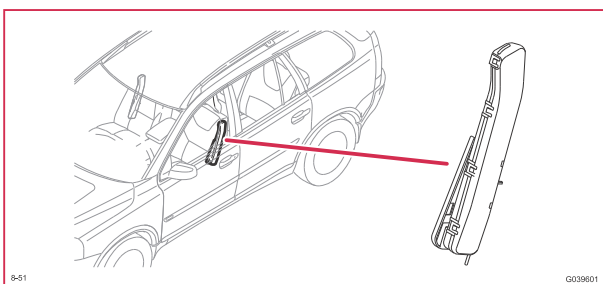
**8/46 启动元件 DSTC**



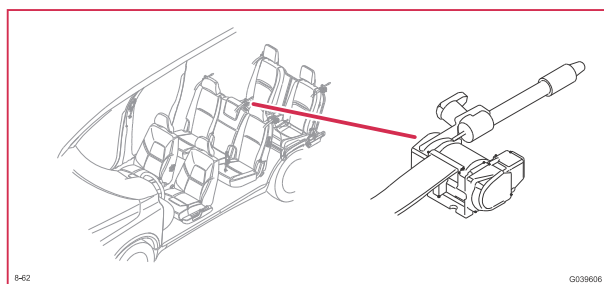
**8/61 驾驶员侧安全气囊起爆器第 2 阶段**



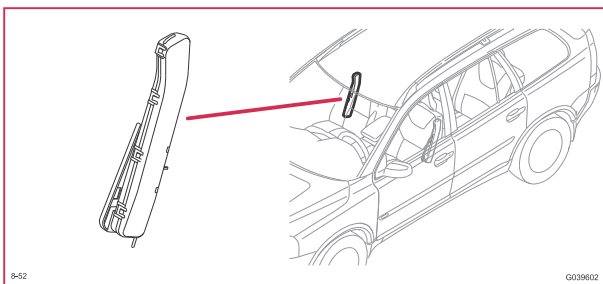
**8/51 左前侧安全气囊点火器**



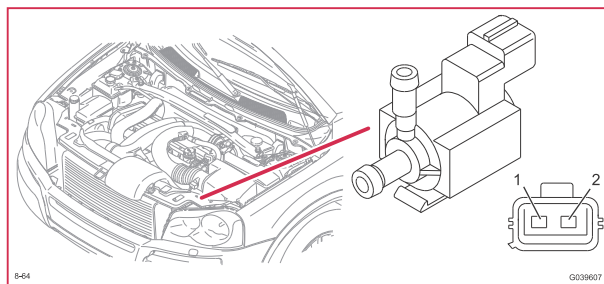
**8/62 后排中座安全带张紧器起爆器**



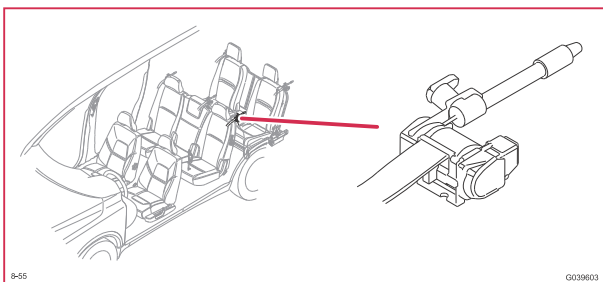
**8/52 右前安全气囊点火器**



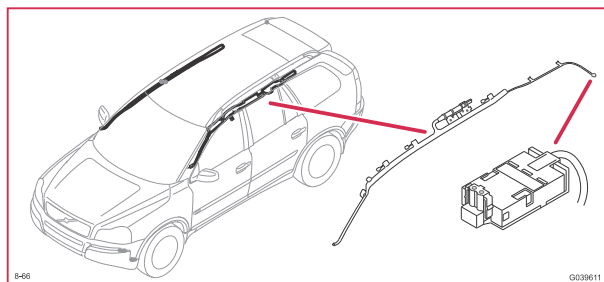
**8/64 柴油发动机架电磁阀**



**8/55 左后安全带张紧器起爆器**

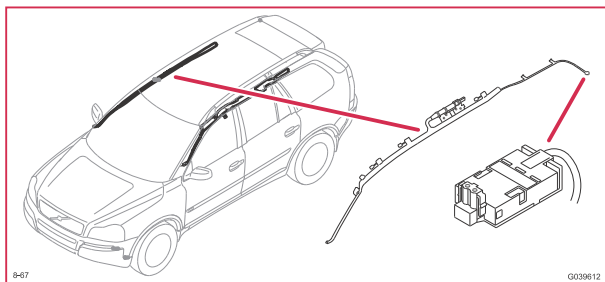


**8/66 左侧气帘起爆器**

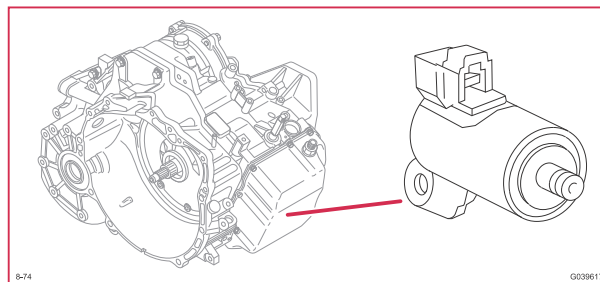


# 零件插图 8/67 - 8/94

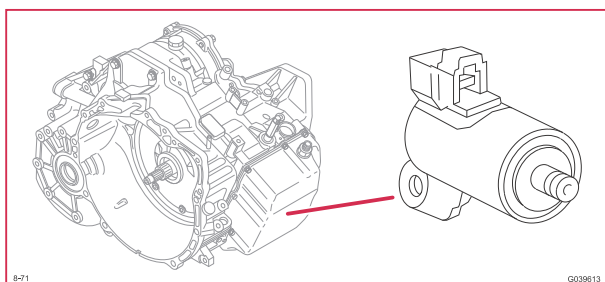
**8/67 右侧气帘起爆器**



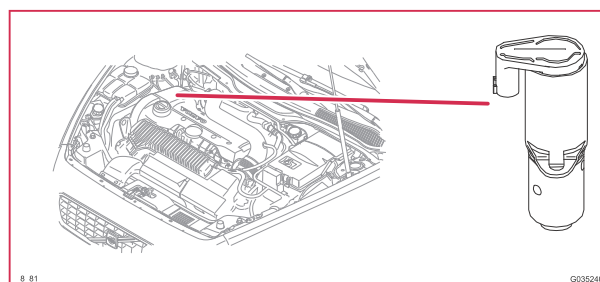
**8/74 排档电磁线圈 5 AW51**



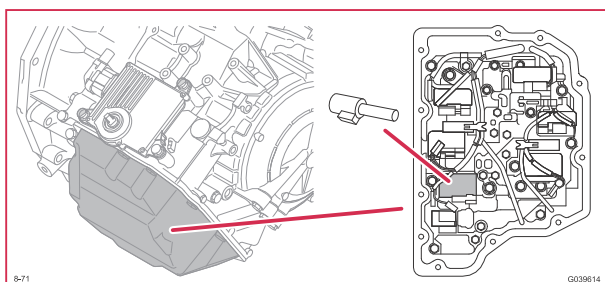
**8/71 节气门电磁线圈 AW51**



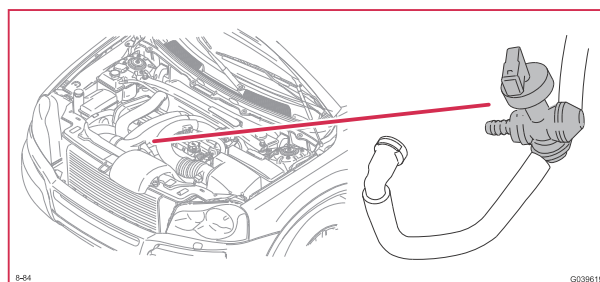
**8/81 可变气门正时输出电磁线圈**



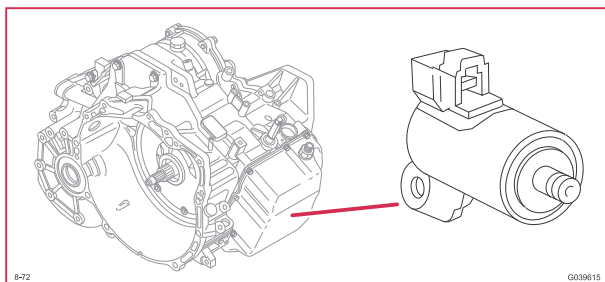
**8/71 节气门电磁线圈 TF-80SC**



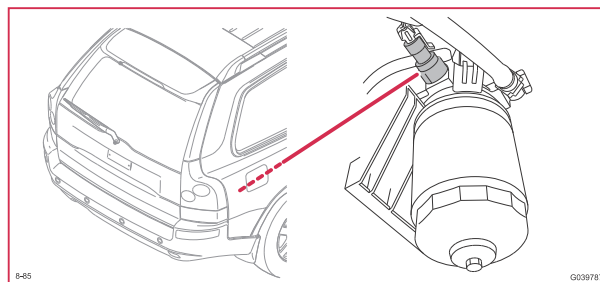
**8/84 真空泵开关**



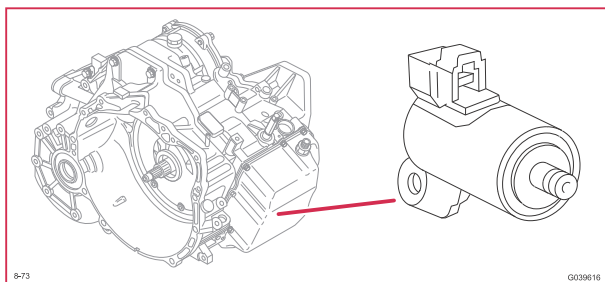
**8/72 排档电磁线圈 3 AW51**



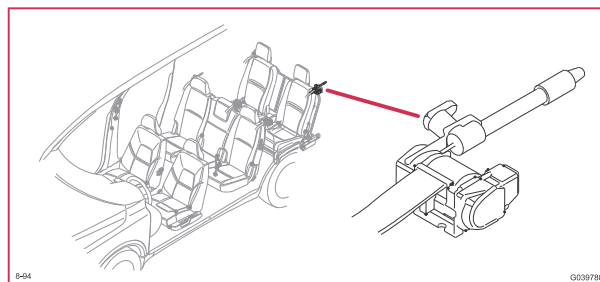
**8/85 温度调节开关与燃油滤清器加热**



**8/73 排档电磁线圈 4 AW51**

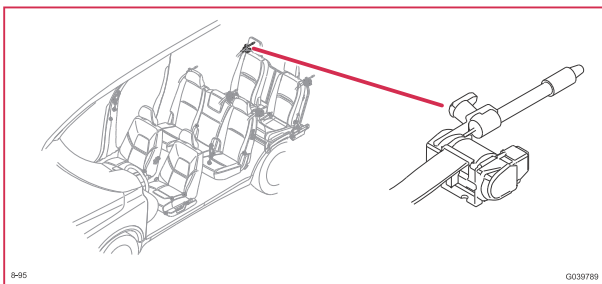


**8/94 左座安全带张紧器起爆器，座位第三排**

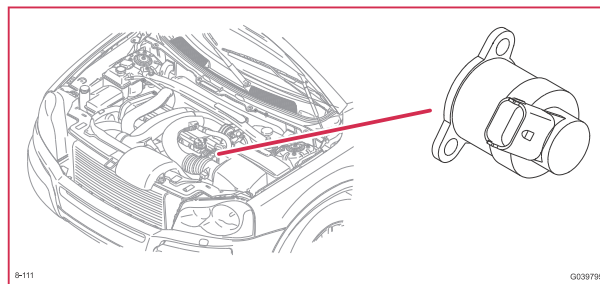




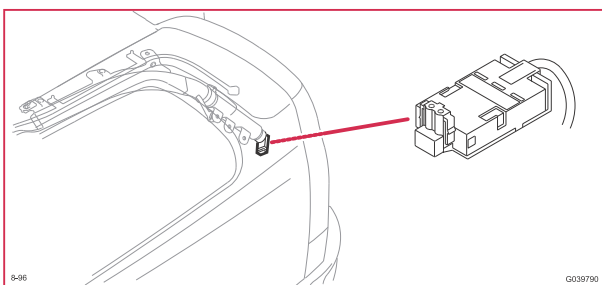
8/95 右座安全带张紧器起爆器，座位第三排



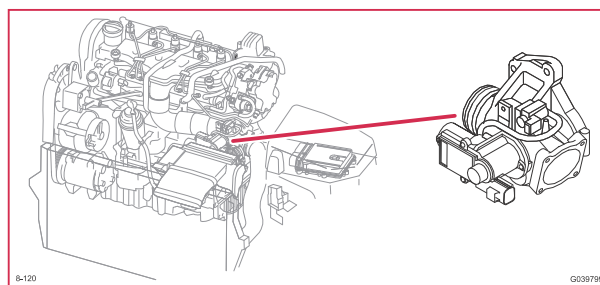
8/111 燃油流调节阀



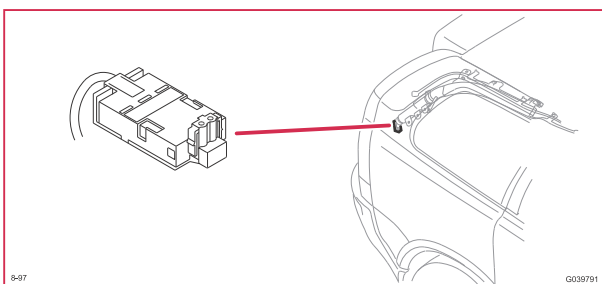
8/96 左座气帘起爆器，座位第三排



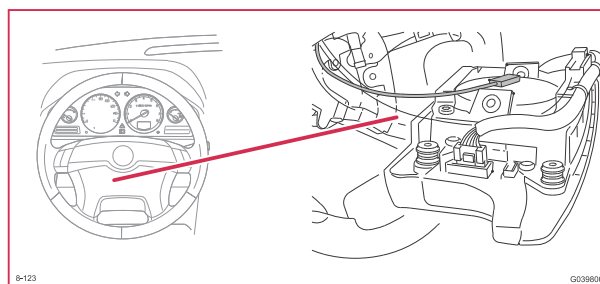
8/120 EGR 阀



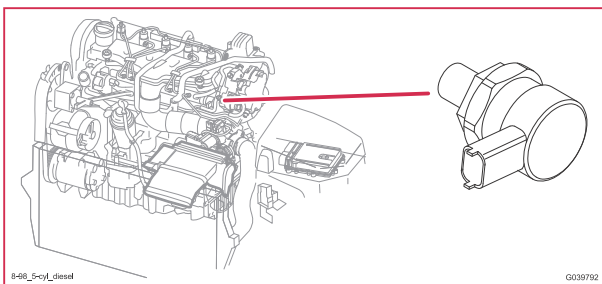
8/97 右座气帘起爆器，第三排座椅



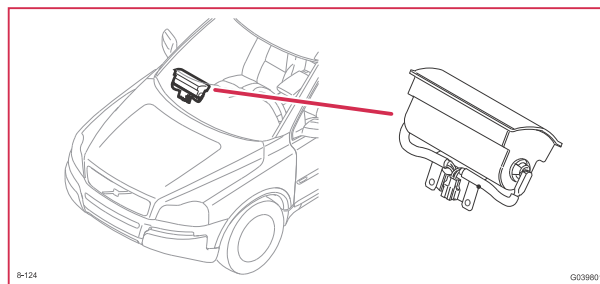
8/123 驾驶员侧安全气囊起爆器第 3 阶段



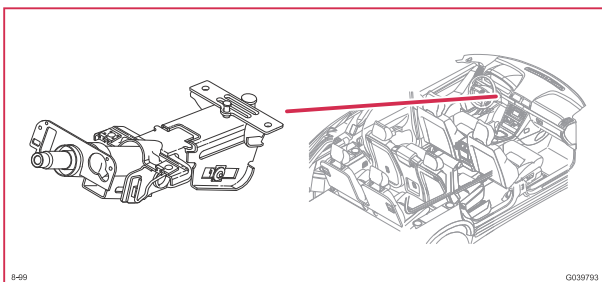
8/98 燃油压力调控阀，柴油发动机



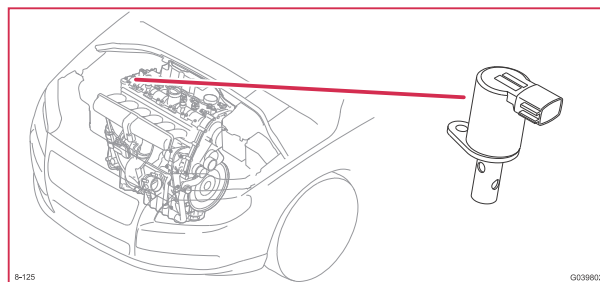
8/124 乘客侧安全气囊起爆器第 3 阶段



8/99 转向柱起爆器

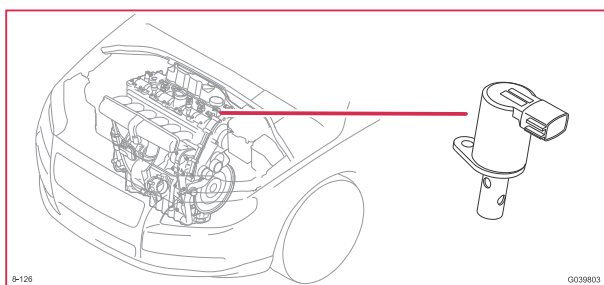


8/125 前凸轮轴纵面电磁线圈

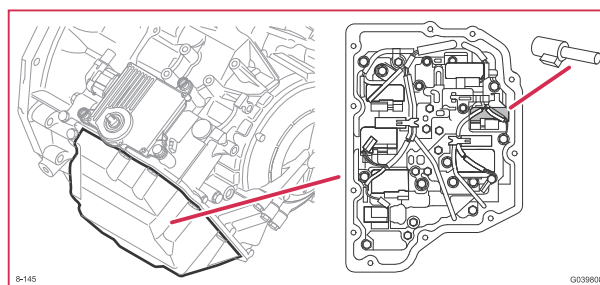




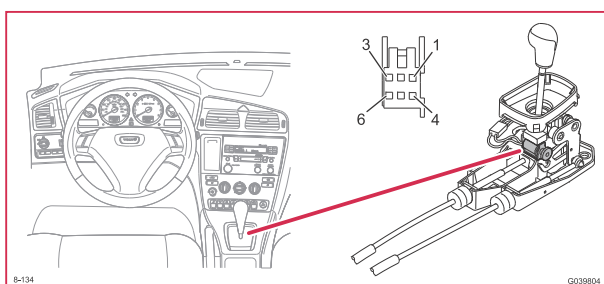
8/126 后凸轮轴纵面电磁线圈



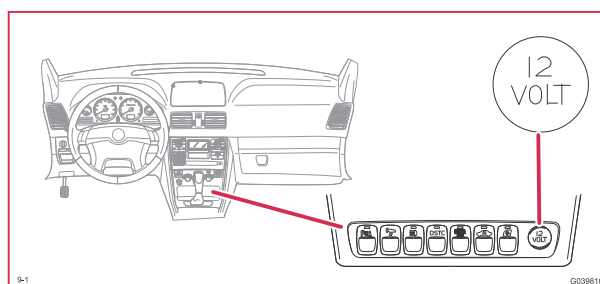
8/145 线性压力电磁线圈 SLC3 TF-80SC



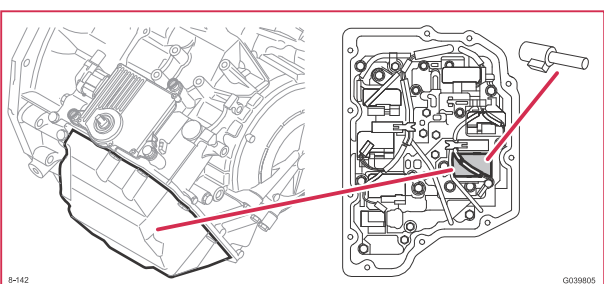
8/134 手排倒档锁定电磁阀



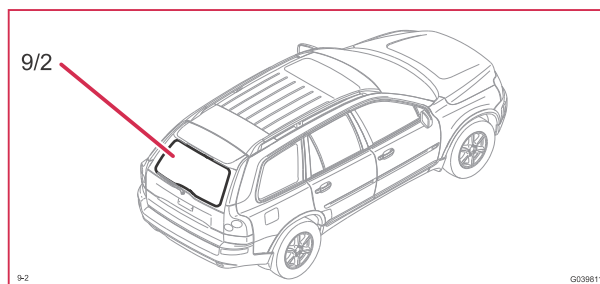
9/1 前部 12 V 电源插座



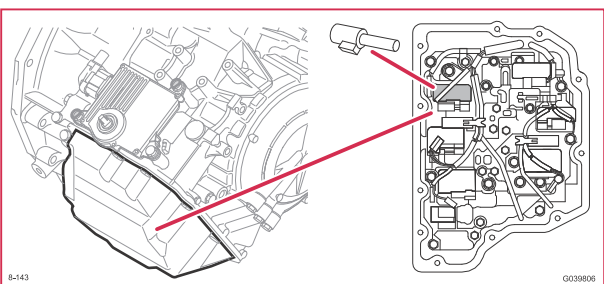
8/142 线性压力电磁线圈 SLB1 TF-80SC



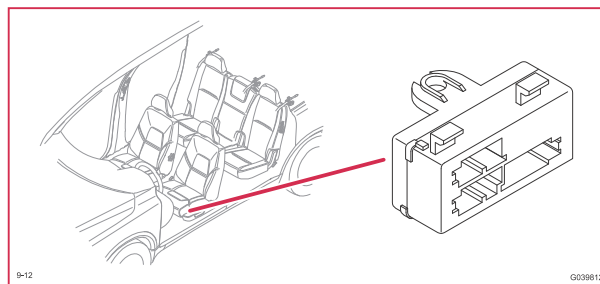
9/2 后车窗除霜器



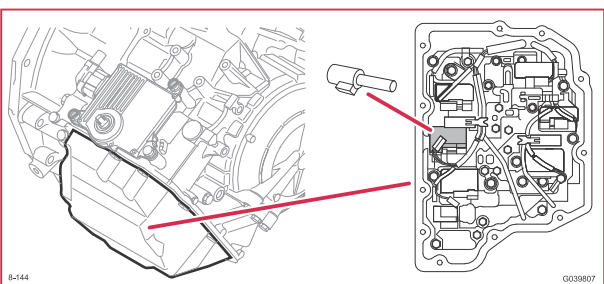
8/143 线性压力电磁线圈 SLC1 TF-80SC



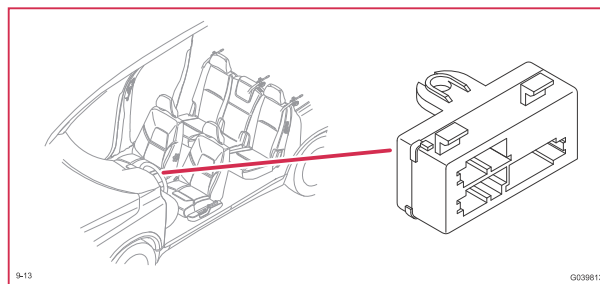
9/12 座椅加热模块 (SHM)，左侧



8/144 线性压力电磁线圈 SLC2 TF-80SC

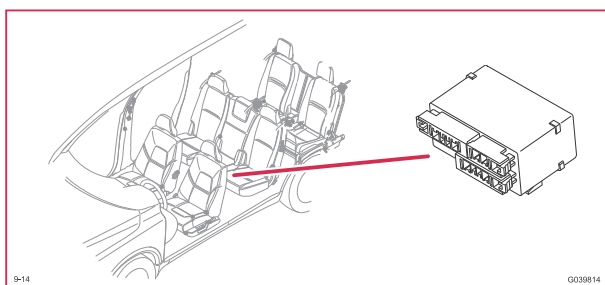


9/13 座椅加热模块 (SHM)，右侧

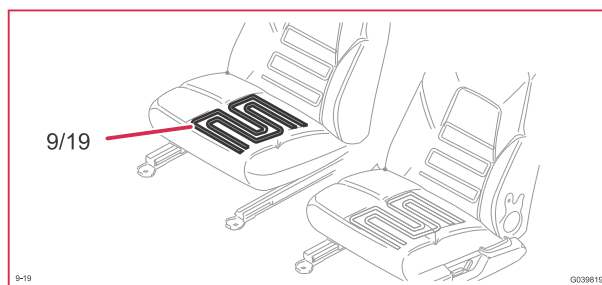


# 零件插图 9/14 - 9/33

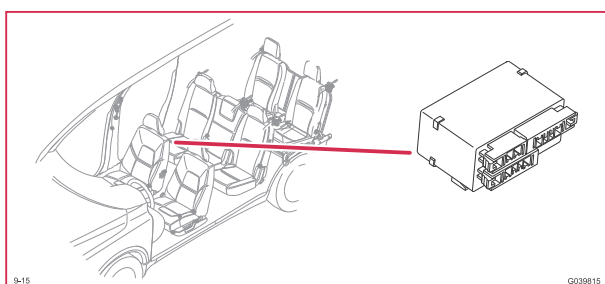
9/14 控制模块, 左后座椅加热器



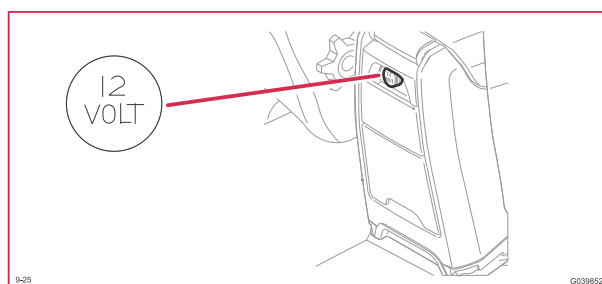
9/19 右座椅电热元件



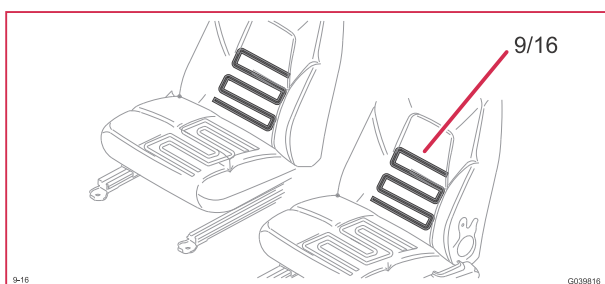
9/15 右后座椅加热控制模块



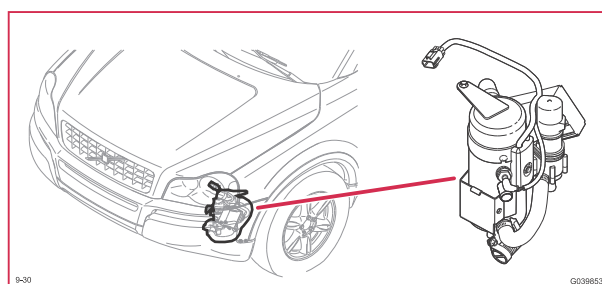
9/25 后部 12 V 电源插座



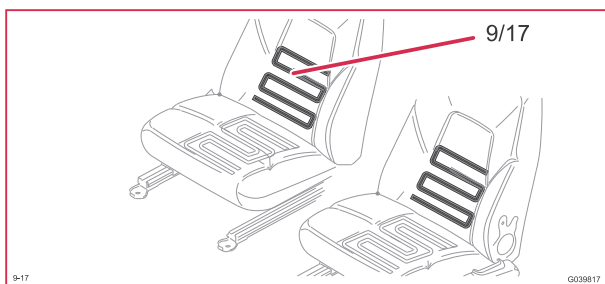
9/16 左座椅腰部支撑电热元件



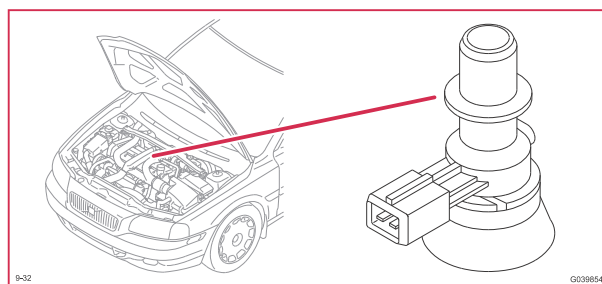
9/30 辅助加热器



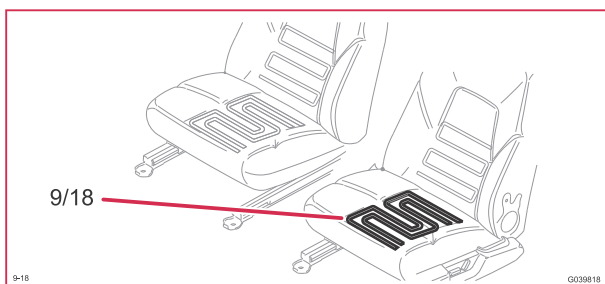
9/17 右座椅腰部支撑电热元件



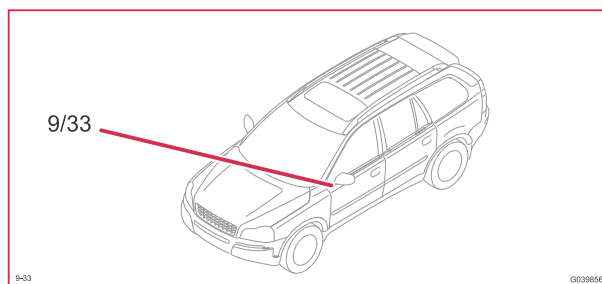
9/32 曲轴箱通风 PTC 电阻器



9/18 左座椅电热元件



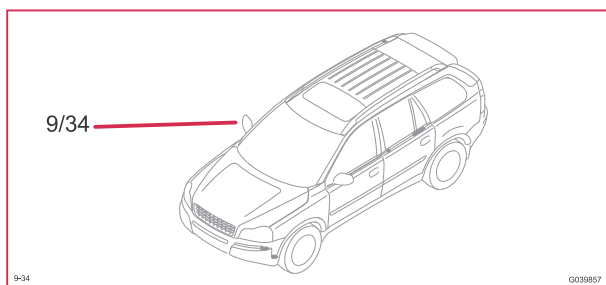
9/33 左侧电热后视镜



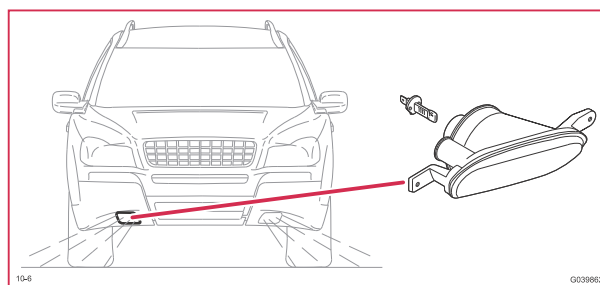
# 零件插图

## 9/34 - 10/14

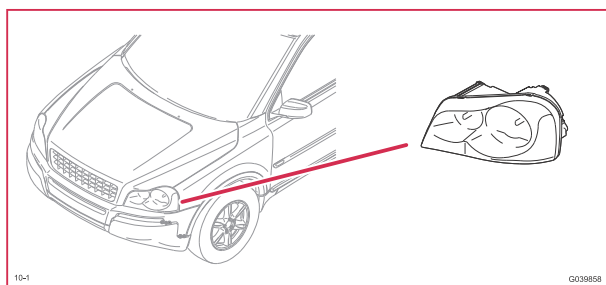
9/34 右侧电热后视镜



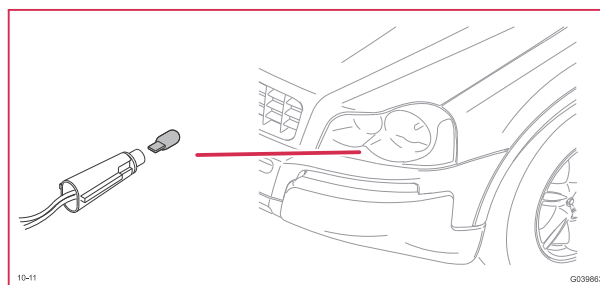
10/6 雾灯，右前



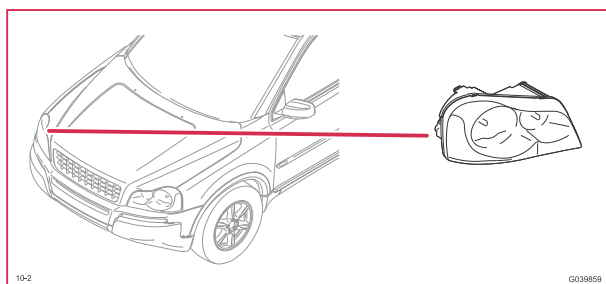
10/1 灯罩，左前



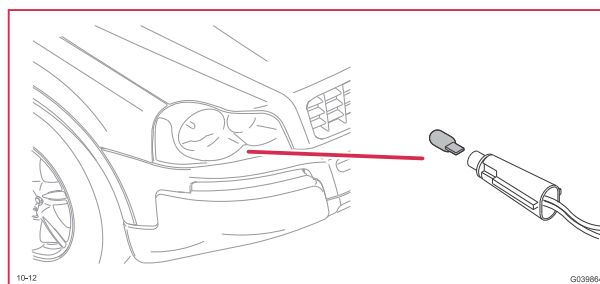
10/11 左前运行灯 / 驻车灯



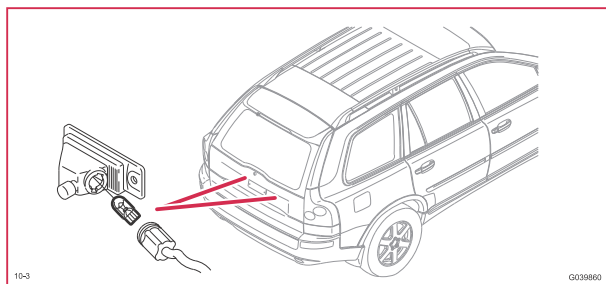
10/2 灯罩，右前



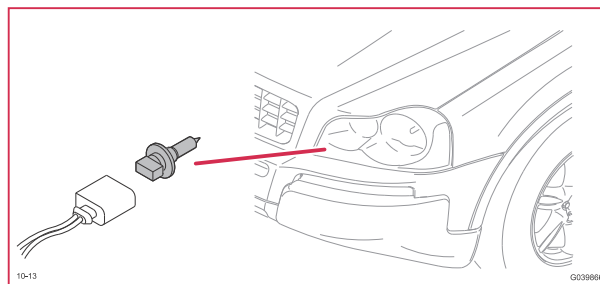
10/12 右前运行灯 / 驻车灯



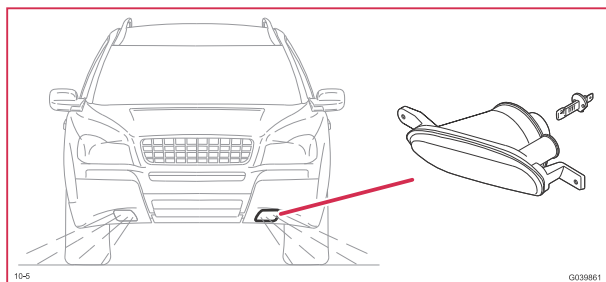
10/3 牌照灯



10/13 左前方向指示灯



10/5 雾灯，左前



10/14 右前方向指示灯

